

# DORO<sup>®</sup>

## LUCENT



**Skull Clamp**  
Item no. 1101.001



BLACK  
FOREST  
MEDICAL  
GROUP



**PLAY-FREE  
OPEN/LOCK**

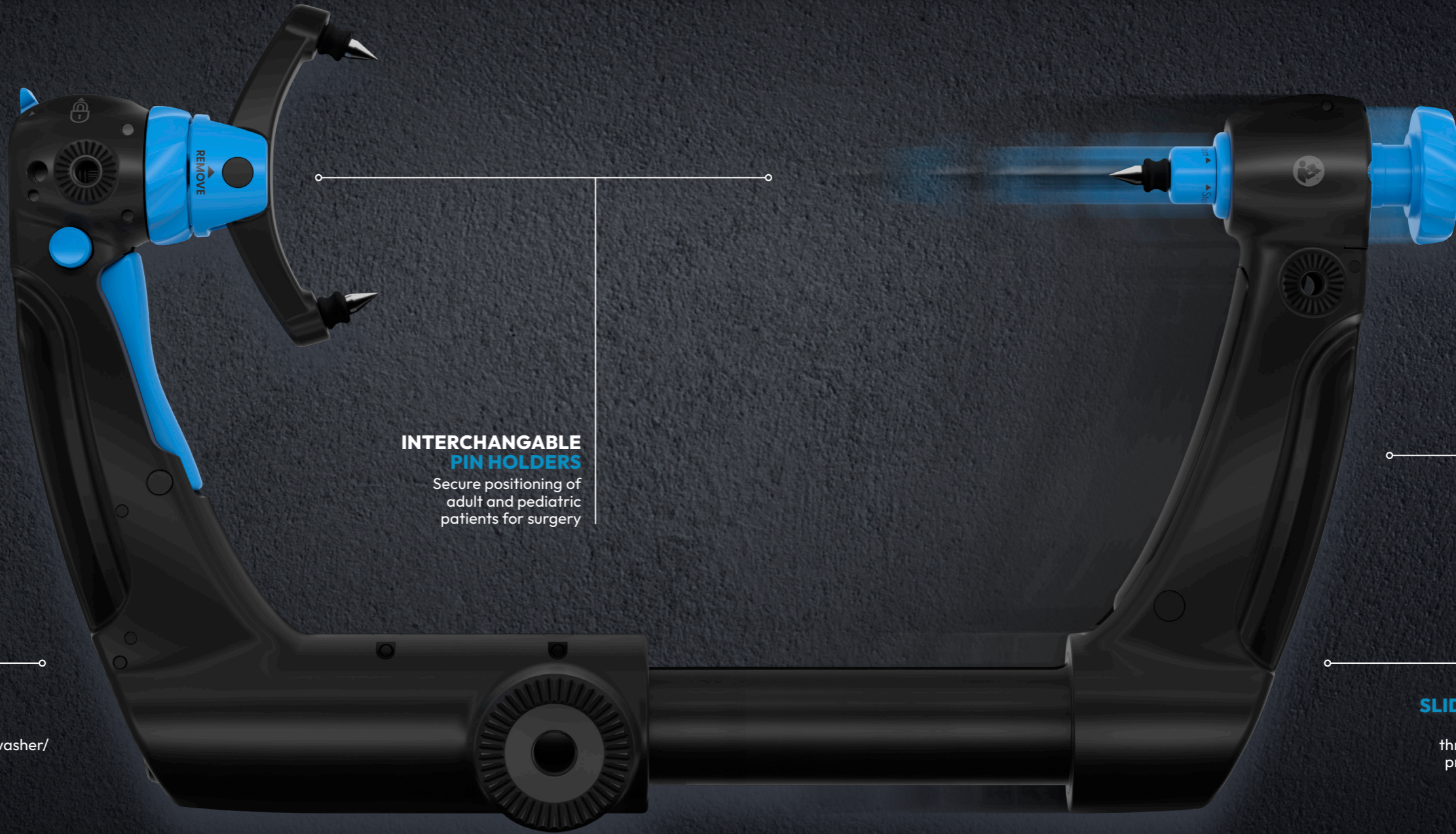
Enhanced precision  
for neuro-navigation

**PATENTED  
RELEASE  
MECHANISM**

Access to all controls,  
including the release  
mechanism, while  
maintaining a firm grip  
on the skull clamp

**AUTOMATED  
CLEANING**

The DORO LUCENT® Skull Clamp  
can be washed in an automated washer/  
disinfector and will withstand  
temperatures up to 134°C / 273 F.



**INTERCHANGABLE  
PIN HOLDERS**

Secure positioning of  
adult and pediatric  
patients for surgery

**EASY TO READ  
PIN FORCE  
INDICATOR**

Precise force  
scale indicates  
force application  
in N and lbs.

**UNIQUE  
QUICK-RAIL®**

Intuitive mounting  
of retractor systems  
and other accessories

**SMOOTH  
SLIDING MECHANISM**

Equal force distribution  
throughout the ratcheting  
process results in optimal  
precision and control



**PLAY-FREE  
OPEN/LOCK**

Enhanced precision  
for neuro-navigation

**PATENTED  
RELEASE  
MECHANISM**

Access to all controls,  
including the release  
mechanism, while  
maintaining a firm grip  
on the skull clamp

**AUTOMATED  
CLEANING**

The DORO LUCENT® Skull Clamp  
can be washed in an automated washer/  
disinfector and will withstand  
temperatures up to 134°C / 273 F.



**INTERCHANGABLE  
PIN HOLDERS**

Secure positioning of  
adult and pediatric  
patients for surgery

# CRYSTAL CLEAR, EVERY TIME



The DORO LUCENT® Skull Clamp is the ideal choice for all neurosurgical procedures involving intraoperative CT, X-ray based Angiography or X-ray imaging.

Its rounded contours and the absence of straight surfaces ensure superior imaging results and make it the most ergonomic device on the market. Manufactured to support exceptional neuronavigational precision, this advanced skull clamp features a smooth and precise ratcheting system and a play-free open/lock mechanism.

**Perfect Control and Handling**

With the DORO LUCENT® Skull Clamp, we introduce a unique release mechanism, empowering surgeons to fully self-operate the clamp. Having access to all controls without changing the hand position ensures precise adjustments and an uninterrupted workflow. Interchangeable pin holders allow the right pin configuration for every patient and head size. Dedicated pediatric pin holders, which ensure a safe immobilization of children's heads, are available. The clamp excels with its advanced features, making it the best choice for any neurosurgical imaging procedure.

| ITEM NO.  |          |
|---|----------|
| DORO LUCENT® Skull Clamp                          | 1101.001 |
| DORO LUCENT® Pediatric Upgrade Kit                | 1101.040 |
| DORO LUCENT® Disposable Skull Pins (3 Procedures) | 1106.103 |





Automated Cleaning

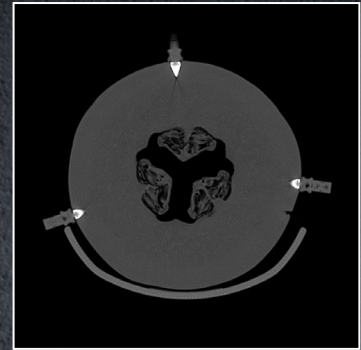


Integrated Pin Force Indication



# DORO<sup>®</sup>

LUCENT



## A NEW ERA OF IMAGING QUALITY

The combination of the new Skull Clamp and the accompanying DORO LUCENT<sup>®</sup> Skull Pins unveils an unparalleled level of detail and accuracy, providing unmatched support to neurosurgeons and their teams during intra-operative CT imaging procedures. When used together, it is possible to eliminate nearly all imaging artefacts, which leads to a remarkable clarity of the resulting images.







BLACK  
FOREST  
MEDICAL  
GROUP

**pro med instruments GmbH**, part of Black Forest Medical Group  
Bötzingen Straße 86, 79111 Freiburg, Germany  
Phone: +49 761 384 222 - 10 | [info@blackforestmedical.com](mailto:info@blackforestmedical.com)

**USA** pro med instruments Inc., part of Black Forest Medical Group  
4529 S.E. 16th Place, Suite 101, Cape Coral, FL 33904  
Phone: +1 239 369 - 2310 | [info.us@blackforestmedical.com](mailto:info.us@blackforestmedical.com)

© pro med instruments, part of Black Forest Medical Group, 2023 / 1101  
All rights reserved. The information provided was compiled  
with utmost care. Errors can, however, not be excluded.  
Errors do not entitle to any legal claims. We reserve  
the right to modify the shown products at any time.



Take a peek on our work and visit us on social media!

**[blackforestmedical.com](https://blackforestmedical.com)**

**Skull Clamp**  
Item no. 1101.001

